

HL7 Coupler Service Instructions

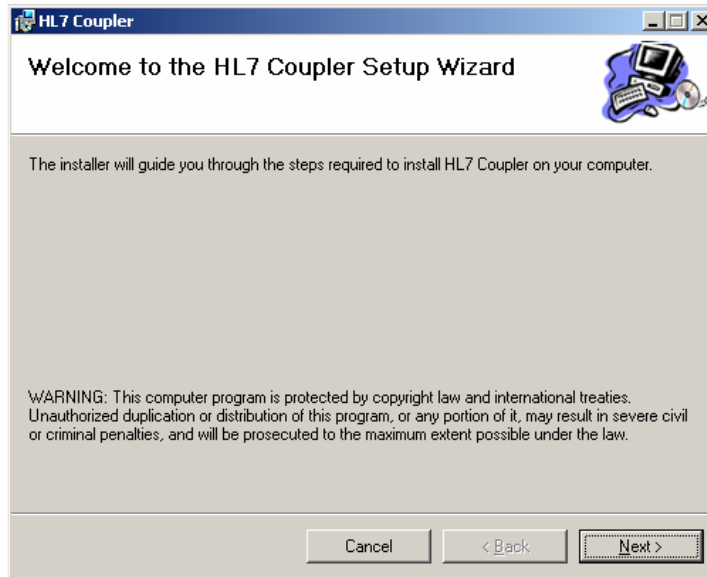
Thank you for selecting the Remote Operations HL7 Coupler software. This software is intended to replace Virtual Private Network (VPN) connections between your facility and the Remote Operations Server Farm.

General Instructions for the Remote Operations HL7 Coupler	1
Installing the Service	2
Uninstalling the Service	6

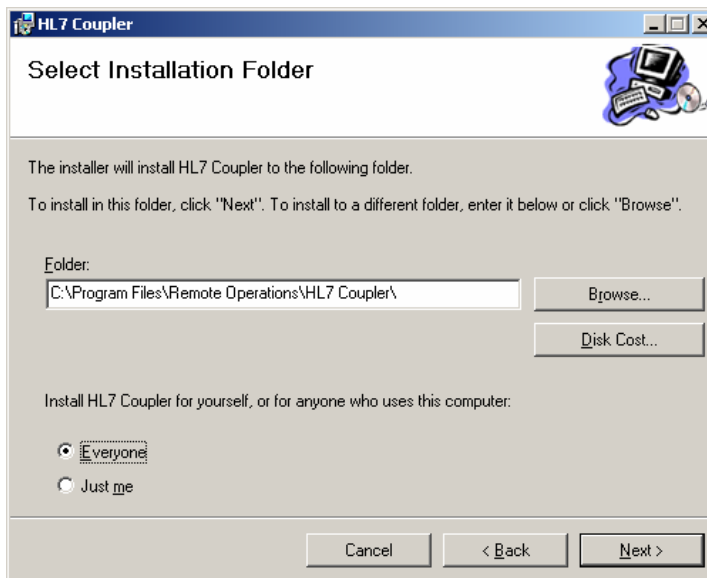
Installing the Service

In order to use the software you must install it. Please follow the installation instructions below.

1. Locate and run the Setup.msi file included with this document. You will be presented a screen that shows the following information. Please click the “Next” button to continue.

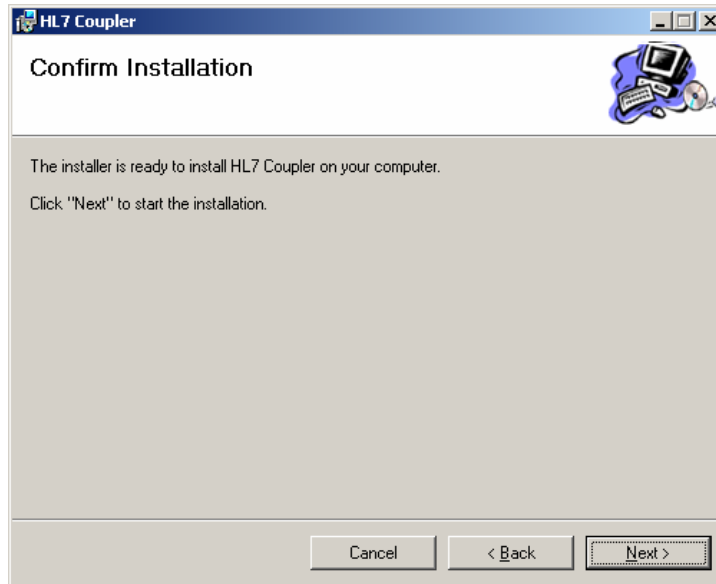


2. You will be presented a screen that indicates the location you would like to install the application. Please select the location that best suits your installation, select the “Everyone” radio button and click the “Next” button.

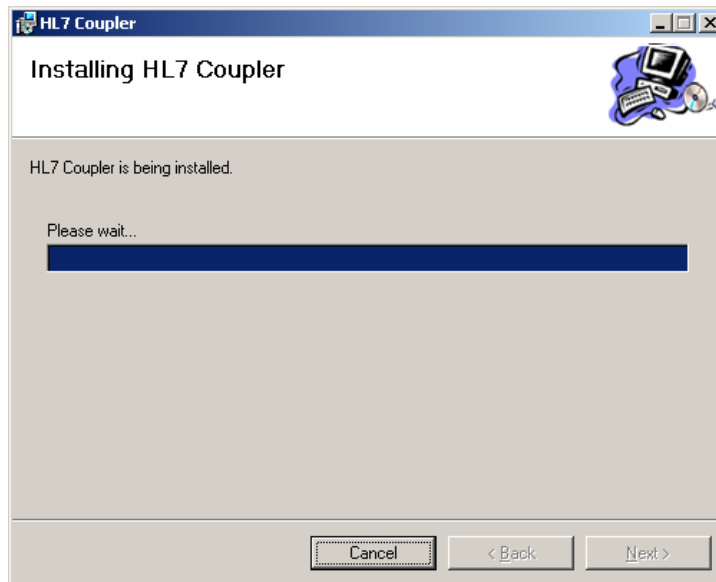


REMOTE OPERATIONS™

3. You will be presented a confirmation screen. Please click the “Next” button.

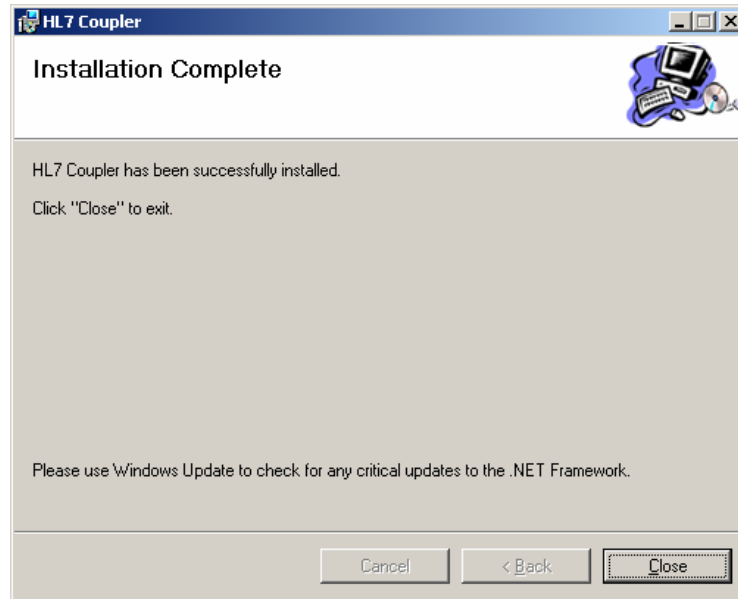


4. You will be presented a progress indicator screen. Please wait while the setup finishes.



REMOTE OPERATIONS™

5. You will be presented the completion screen. Please click the "Close" button.



6. Please open Windows Explorer and navigate to the folder where you installed the service.
7. Please configure the HL7Coupler.exe.config file.
 - a. Please paste the password that was provided to you in the Password segment.
`<add key="Password" value=""/>`
 - b. Please configure the Inbound Ports you want to monitor. These are the ports that your HL7 system uses to connect. Separate multiple ports by commas.
`<add key="MonitorInboundPorts" value="2000"/>`
 - c. Please configure the Outbound Ports you want to monitor. These are the ports that the Remote Operations system uses to connect. Separate multiple ports by commas.
`<add key="MonitorOutboundPorts" value="1003"/>`
 - d. Please configure the internal IP Address and port you would like to monitor. The default IP Address is normally used. The Internal IP Address is the address of your HL7 system. The Internal Port is the port used to send data to your HL7 system.
`<add key="InternalIPAddress" value="127.0.0.1"/>`
`<add key="InternalPort" value="1000"/>`

REMOTE OPERATIONS™

- e. Please configure the external port. The External Port is used to communicate data to the Remote Operations system.

```
<add key="ExternalPort" value="1003"/>
```

- f. Please configure the FailedFolder segment if different from normal installation. The default is normally used.

```
<add key="FailedFolder" value="C:\Program Files\Remote Operations\HL7 Coupler\Failed\"/>
```

- g. If you wish to receive error messages in the Event Log, please set the Verbose segment to true.

```
<add key="Verbose" value="false"/>
```

8. Save the HL7Coupler.exe.config file.
9. Select the "Install HL7 Coupler Service" option from the Remote Operations\HL7 Coupler menu to install the service into the Windows Service Manager.
 - a. Click *Start*
 - b. Select *Programs*
 - c. Select *Remote Operations*
 - d. Select *HL7 Coupler*
 - e. Click *Install HL7 Coupler Service*
10. Congratulations. You have successfully installed the HL7 Coupler Service. You may run `netstat -an` at the command prompt to see that the ports are active.

Uninstalling the Service

In order to uninstall the service, please follow the installation instructions below.

1. Select the “Uninstall HL7 Coupler Service” option from the Remote Operations\HL7 Coupler menu.
 - a. Click *Start*
 - b. Select *Programs*
 - c. Select *Remote Operations*
 - d. Select *HL7 Coupler*
 - e. Click *Uninstall HL7 Coupler Service*
2. You may uninstall the software using the normal “Add or Remove Programs” process.